



# JELLYFISH LAMP

## Instructions

### CONTENTS

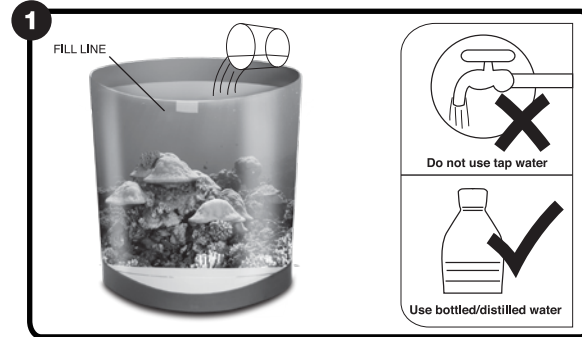
JELLYFISH LAMP (QTY 1)  
LIFE-LIKE JELLYFISH (QTY 3)



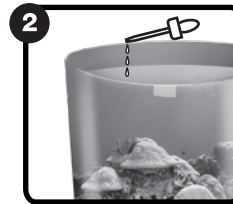
### SET UP

#### NOTE:

- Setup and use requires adult supervision.
- Install batteries before setting up the tank.
- The jellyfish need to be soaked in water for one hour before initial operation.
- Make sure the lamp is placed on a flat level surface.
- It may take up to 24 hours for the jellyfish to settle to the center of the tank.



Lift the lid off and pour water into the tank up to fill line.



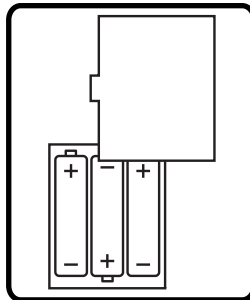
Add 2-3 drops of liquid dishwasher detergent.



To make sure there are no air bubbles in the jellyfish, put them into the tank upside down. This will keep them from floating to the top of the tank.

### BATTERY INFORMATION

- (1) Open the battery door and place 3 "AA" batteries in compartment according to polarity in diagram.
- (2) Close the battery door.



#### WARNING:

THIS ITEM IS INTENDED FOR DECORATIVE PURPOSES ONLY. IT IS NOT A TOY, AND SHOULD NEVER BE USED WITHOUT ADULT SUPERVISION. THE ITEM SHOULD BE PLACED ON A FLAT SURFACE OUTSIDE THE REACH OF CHILDREN.

Requires 3 "AA" batteries (not included). See above diagram for correct polarity.

#### BATTERY WARNING:

- Do not mix old and new batteries.
- Non-rechargeable batteries are not to be recharged.
- The supply terminals are not to be short-circuited.
- Only batteries of the same or equivalent type as recommended are to be used.
- Batteries are to be inserted with the correct polarity.

#### USING AN ADAPTER:

Make sure you use a nationally recognized testing laboratories certified adapter. Plug into the adapter jack on the back of the unit.

KEEP THIS MANUAL FOR REFERENCE AS IT CONTAINS IMPORTANT INFORMATION.

### OPERATION

#### BUTTON FUNCTIONS

**ON/OFF button:** turn on / turn off. The lamp will begin in a default mode that cycles through all light colors.

**SET button:** Use to select from a total of 6 lighting colors.

- Press button 1 time: shows red color only
- Press button 2 times: shows blue color only
- Press button 3 times: shows green color only
- Press button 4 times: shows red and blue
- Press button 5 times: shows red and green
- Press button 6 times: returns to default mode

#### CARE

Do not submerge the top cover in water or place under running water. Drain water before cleaning. Change the water regularly to keep the lamp clean. Be careful not to drop it.

