

ELECTRONIC
**METAL
DETECTOR**



**INSTRUCTION
MANUAL**



- **Real Working Metal Detector Locates Buried Coins, Jewelry and More**
- **Adjustable Height Control for Children of All Sizes**
- **Built-In Sound Alerts and LED Indicators**
- **Digging Shovel and Treasure Map Included**

INTRODUCTION

Congratulations on your purchase of the Blue Hat Toy Company® Metal Detector. This fun and educational detector will provide hours of entertainment. The Metal Detector is sure to excite the young explorer to create exciting new adventures.

Please read all instructions and warnings in this manual prior to using your new Metal Detector.

- Keep this instruction manual as it contains important information for future reference.
- This Metal Detector uses one 9V battery (not included). Alkaline batteries are recommended.
- Adult assembly and a Phillips screwdriver (not included) will be required for battery installation.

TABLE OF CONTENTS

Getting Started.....	1
Getting Started.....	2
Using Your Metal Detector.....	3
Troubleshooting/Care For Your Metal Detector.....	4

BATTERY WARNING:

- Do not mix alkaline, standard (carbon-zinc) and rechargeable batteries (Nickel Metal Hydride).
- Do not mix old and new batteries.
- Non-rechargeable batteries are not to be recharged.
- Rechargeable batteries are to be removed from the item before being charged.
- Rechargeable batteries are only to be charged under adult supervision.
- Exhausted batteries should be removed immediately and must be recycled or disposed of properly according to state or local government ordinances and regulations.
- The supply terminals are not to be short-circuited.
- Only batteries of the same or equivalent type as recommended are to be used.
- Batteries are to be inserted with the correct polarity.
- Do not dispose of batteries in a fire - batteries may leak or explode.

KEEP THIS MANUAL FOR REFERENCE AS IT CONTAINS IMPORTANT INFORMATION.

GETTING STARTED

CONTENTS

- 1 METAL DETECTOR
- 1 TREASURE MAP
- 1 ARM REST
- 1 ARM REST KNOB
- 1 SHOVEL



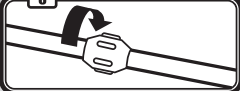
GETTING STARTED

5



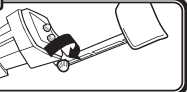
Using a Phillips screwdriver (not included), insert one of the included screws and tighten to secure stem.

6



Tighten stem at the preferred height by rotating the lock nut clockwise towards metal detector.

7



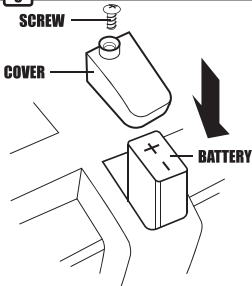
Rotate knob clockwise to secure the arm rest to the metal detector.

8



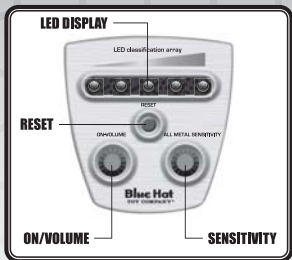
Hold one knob and rotate the other knob clockwise to tighten search coil into position.

9



Adult supervision is required to change/install batteries. Using a Phillips screwdriver, remove the battery cover. Insert one 9V battery (not included) in the polarity direction indicated. Replace the battery cover and tighten the screw.

USING YOUR METAL DETECTOR



Rotate on/volume knob clockwise to turn on and adjust the volume. Rotate the sensitivity knob clockwise to increase sensitivity.

The detector makes an audible sound. Plug earphones into the side of your metal detector if you want to keep the sound private.



Sweep side to side gently with the search coil parallel to the ground and about 1/2" above it. As you locate and get closer to metal more LEDs will light and the detector will beep faster. Once an object is detected, you will hear one consistent tone and all of the LEDs will light up. Sweep the search coil over a couple of times to make sure it is not a false signal, then use the shovel to see what you found. You can also create your own treasure map!

TROUBLESHOOTING

If you are getting a lot of false signals:

Reduce the sensitivity. Also make sure you sweep the search coil **slowly**.

If you are getting no signals:

Make sure the search coil is **parallel** to the ground and about 1/2" above it.

If your earphones (not included) don't work:

Make sure they are **plugged in all** the way.

If your metal detector is constantly beeping loudly:

The batteries may be **low**. Try replacing the batteries.

If your metal detector doesn't turn on:

The batteries may be **dead**. Try replacing the batteries.

CARING FOR YOUR METAL DETECTOR

Handle your metal detector with care. Do not drop it. Store it at normal room temperatures. Wipe it clean with a damp cloth.



Metal Detector requires one 9V battery (not included).

Blue Hat Toy Company and the Blue Hat Toy Company logos are registered trademarks of MerchSource, LLC.

©2009 MerchSource, LLC. All rights reserved. Distributed by MerchSource, LLC, Foothill Ranch, CA 92610.

The artwork and design of this manual are protected by US copyright law and may not be reproduced, distributed, displayed, published or used for any purpose without prior written permission. It is not permitted to alter, remove or reproduce any trademarks or copyright notice from this manual.

PATENT PENDING